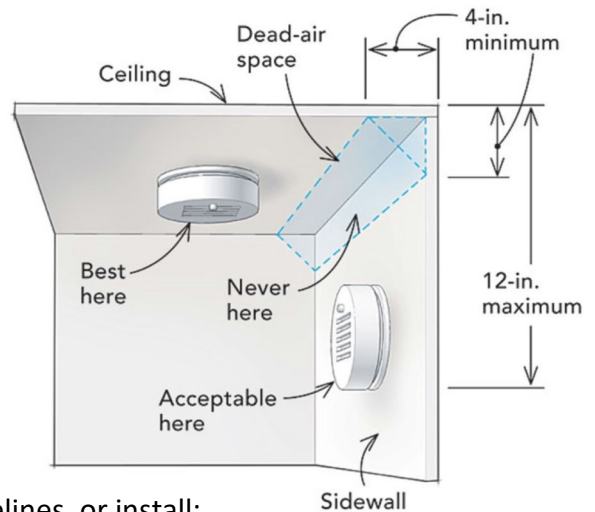
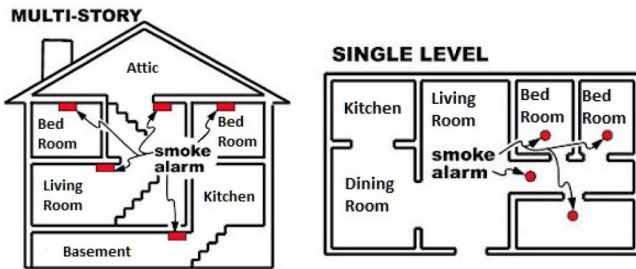




# BE ALARMED! SMOKE ALARM INSTALLATION GUIDE

## ABOUT THE SMOKE ALARMS:

- Ionization smoke alarm with 10-year concealed battery
- Included: Mounting bracket, 2 wall screws, 2 anchors, maintenance guide
- Test Button (test monthly)
- Hush Button (use only in case of nuisance alarm)
- No battery replacement
- Replace entire unit every 10 years



## 1ST - INSTALL ALARM(S):

- Follow fire department installation program guidelines, or install:
  - ◆ In every sleeping area.
  - ◆ Outside of every sleeping area.
  - ◆ On every level of the home (including basement).
  - ◆ On the ceiling or high on a wall.
  - ◆ Not within 3 feet of windows, doors, vents, ceiling fans, or bathrooms.
  - ◆ Not within 15 feet of cooking appliances.
- Use wall screws to mount bracket to wall.
- Place alarm on bracket and twist clockwise (alarm will sound).

## 2ND - EDUCATE THE RESIDENT(S):

- Show how to test the alarm (should be tested monthly).
- Provide the resident with the Smoke Alarms & Your Safety Trifold.
- Review the Home Fire Safety Checklist & Home Fire Escape Plan documents with the resident.

## 3RD - RECORD THE INSTALLATION(S)

- Record and submit the installation data via the Be Alarmed! web portal.

